

Parish News

March 2022

Aley Green Pepperstock
Slip End Woodside

**THE COMMUNITY MAGAZINE FOR YOU!
WITH INFORMATION AND NEWS FROM YOU**

delivered to the whole of the Parish

Editors' Notes

It is hard to believe that when this magazine drops through your doors, 1/6 of the year will have gone by!

Some things may not be back to “normal” yet but I am finding myself as busy as ever with lots of activities to do and meetings to attend. I am still not sure why many of the things I do seem to happen on a Tuesday. Clearly it is a good day for activity!

Community events and things to do are back in action across the Parish and beyond. This month we have “Pancakes and Company” with bacon butties, along with pancakes cakes and the usual good company at Aley Green Church. The Community Coffee mornings are re-starting at St. Andrew’s Church. By the time we include the weekly Chatty Club with sandwiches / cake etc available for a small fee, we will find ourselves able to chat, eat and drink with lots of new friends!

How do you relax? What do you do to get out and about? If you like to take a photo or two (with phone or camera....) the Photography Club meets on the first and third Tuesdays at the Social Club. Should you prefer to curl up with a good book then the Book Club might challenge you to read some different books occasionally. Meetings are at the Frog and Rhubarb, usually on the last Tuesday of the month! Alternatively, if you prefer to be active—try a walk or look up some of the many exercise or sporting activities in the area...

My interest in Family History showed me that, in many of the places my ancestors lived, community life seemed to revolve around the churches or the local pub! Our local churches provide friendship and support for young and old, not just Sunday services. Also, long may our village “watering holes”, continue to provide food, drink and company.

We are trying to publish some of the future Village events so that people can be involved and have the opportunity to meet others. Make a note of the dates in your diary and resolve to join in something new!

Should you have something planned, please let us know!

EXPANSION OF LUTON AIRPORT CONSULTATION

8 February - 4 April

Luton Airport proposals include a new terminal, supporting facilities and infrastructure, alongside adjustments to existing terminal building.

This would allow expansion to increase the current permitted cap of 18 million passengers per annum to 32m each year.

Full details on the consultation can be obtained via project website:-

www.lutonrising.org.uk

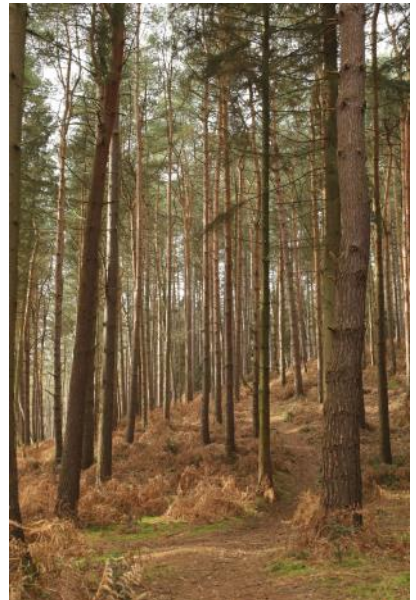
USB drives containing the consultation materials are available free of charge from futureluton@lutonrising.org.uk or by voicemail 0800 538 5203.

Note: Consultation presentation - 5 March 10.30-3.0pm Village Hall

There is also information about this in the Parish Council Report



More good pastimes—watching the wildlife or taking a stroll in the woods or the countryside!





PARISH COUNCIL UPDATE

The latest Parish Council Meeting was held on Monday 7th February in the Village Hall.

One Planning Application was discussed this month:

CB/22/00179/FULL – 4 Harrier Court, Woodside Road – Change of use from Offices (B1/E) to dwelling (C3). After a short discussion, it was agreed to submit a “no comment” to CBC Planning.

Fly Tipping

It has been noted that there has been increased fly tipping activity in Woodside Road. The Parish Council has received no update from CBC regarding the deployment of covert cameras at “hot spots”. CBC now do a weekly collection sweep of the “hot spots”.

Highways and Footpaths

Following a request by a resident, the Parish Council will investigate the costs associated with a new waste bin in Church Road, close to the M1 bridge.

Another resident asked about speeding cars in Mancroft Road, near the Animal Park and the Clerk was asked to contact CBC regarding the costs of new speeding sign.

Concern was also expressed regarding the use of Front Street/ Half Moon Lane as an alternative route once the Newlands Road development commences. Parts of Half Moon Lane are not appropriate for larger vehicles. The Clerk was asked to contact our two CBC Ward Councillors to ask CBC to investigate the likely impact to roads in Slip End.

Luton Airport Expansion

London Luton Airport (now trading as Luton Rising) is currently holding a Statutory Consultation (from the 8th February to the 4th April) regarding a new Terminal and supporting facilities and infrastructure. This would allow expansion of the Airport from the current permitted 18 mppa (million passengers per annum) up to 32mppa.

Associated with this Consultation Luton Rising is holding a number of Consultation Events. This includes an event taking place in Slip End Village Hall on Saturday the 5th March from 10:30 to 15:00. The Parish Council is encouraging Residents to attend the event and if they feel strongly about the plans participate in the Consultation at www.lutonrising.org.uk or via email to

2022consultation@lutonrising.org.uk or via post to FREEPOST FUTURE LUTON 2022.

If you are unable to attend the 5th March event then events will also take place at:

Markyate Village Hall on the 16th February from 15:00 to 20:00
Hitchin Town Hall on the 10th March from 15:30 to 20:30
Wigmore Church and Community Centre on the 26th March from 10:30 to 15:00.

There is no event scheduled for Caddington, so if you know people in Caddington who you think may be interested in participating in the Consultation then please make them aware of the Slip End event or other venues.



Time to get walking again!

At this time of year we start to think about the mud drying up and getting out to walk in the beautiful English Countryside again, but where to find new and interesting walks?

Walking in Bedfordshire :- www.walkinginengland.co.uk/beds has hundreds of walks to download and print, free, it also has books of walks, details of all the walking groups in the county and much more. Whether you want to walk on your own or with a group all the information is there in one place.

John Harris (the custodian of the website) said 'There is so much walking information on the web but it is difficult to find. Walking in Bedfordshire (part of the Walking in England website - one for each county in England) has brought it together in one place so whether you are walking from home, or away on holiday, you will be able to find a walk suitable for you'.

With walks from half a mile to twelve miles plus long, and a note of suitability for pushchairs and wheelchairs, everyone can find a walk to enjoy.

So, home or away, check out the websites and get walking!

John Harris

<https://walkinginengland.co.uk/>

A reminder on a similar subject:-

As well as resolving to keep our village tidy (see p11), don't forget the countryside code which is all about following proper rights of way, respecting the beauty of nature around you and leaving it as you found it! There have been comments about usage of certain paths in the area recently on facebook, hopefully this will help...

<https://www.gov.uk/government/publications/the-countryside-code>



Follow advice and local signs

In some cases, additional higher rights of access or permissive access could exist.

Footpath



Bridleway



Restricted Byway



Byway open to all traffic



Permissive Path

Follow advice on local signs as landowners voluntarily provide access to these paths and choose who can use them. Some open access areas are also made available in the same way.



National Trail

National Trails are created for walking, with horse-riding and cycling possible on some trails or trail sections.

www.nationaltrail.co.uk



Open Access

You can walk and explore away from paths.

www.openaccess.naturalengland.org.uk

For further information visit www.gov.uk/countryside-code

Richard Gurney & Son Contracting Services

Longview, Luton Road, Markyate

*Tree Surgeons & Fencing Specialists
Hedge Trimming & Tree-stump removal
Wood Chippings (good for mulching)
Logs for Sale*

Tel. (01582) 840407

Established 1970 - Fully Insured

Hydrotech Plumbing

Your local plumbing and heating engineers:

- Boiler breakdown and servicing
- New Boiler installation
- Landlords gas safety certification
- Gas fire installation and servicing
- All gas and plumbing work undertaken
- Fully insured
- Free quotations

MARKYATE based company

01582842889 07932796632



P H SERVICES

CAR & MOTORCYCLE REPAIRS
PHILIP HALL
MECHANIC

- 4 Servicing
- 4 Tyres
- 4 Computer Diagnostics
- 4 Bodywork
- 4 MOT



UNIT 3
MANOR ROAD GARAGE
CADDINGTON

Office: 01582 722251
Mobile: 07769 734417

Damaged bikes wanted for Cash
Nationwide collection
e-Mail: philhall1200@btinternet.com



10% Discount with this voucher!



Need a reliable Window & Carpet Cleaner?

*We operate in the
Slip End area
For free quotation
contact us on
01462 629302
07970 406 926*

Problems with your PC or Apple-mac?



*For expert advice & trouble shooting
call Tony Glynos, 458353 or 07792 653264
tonyglynos@outlook.com*

Friendly

Karen Jordan

07970487338

Grass Cutting
Weeding
Strimming
General Tidying



Reliable

Local

PILATES IN SLIP END

Tuesday morning, Peter Edwards Hall 9.30am
Wednesday evening, Slip End School 7.30pm

All ages & levels catered for. Come & try, first class free.

Introducing the Pilates Reformer Machine. Ideal for rehabilitation after injury or surgery.

Perfect for sport specific training, Pre & Post Natal & general fitness.

For more information contact 07811343566 or email:- golf58.ag@gmail.com

**JOHN SAUNDERS & SON
Incorporating E. Franklin & Co.**

FUNERAL DIRECTORS

48 Duke Street, High Town, Luton



% 731696

Day & Night Service

Monumental Services
Members N.A.F.D.

Prepaid Funeral Plans available



**Frog &
Rhubarb**
Country Pub & Dining

HOME MADE FOOD

01582 452722
www.frogandrhubarb.co.uk



Local agents, Local knowledge

Whether buying, selling or renting, we provide a personalised, professional and individual service to help make your move as smooth as possible. Speak to one of our friendly team today.



01582 841 200

sales@towncountry.uk.net

1 Manor Road, Caddington, Bedfordshire, LU1 4EE

**Town &
Country**

@WAYNE'S

*Professional Hairdressing
for all the family*



@WAYNE'S - Church Road, Slip End - 01582 294 248

Butterfly Funerals

INDEPENDENT FAMILY
FUNERAL DIRECTORS

To find out more or just have a discussion
on what you need to do after a bereavement

please call

01582 968130

or visit our website:

www.butterflyfuneralsltd.co.uk

39 Elm Avenue, Caddington
Luton LU1 4HS

Caring with Compassion

Butterfly Funerals is run by Teresa and Peter who have been in the funeral service business for over 30 years. During that time they have gained a first class reputation for professional quality combined with a caring and compassionate approach to family and friends of the departed.

Services include:

- 24 hour call out 7 days a week
- Traditional funerals
- Bespoke funerals Pre-paid funerals
- Green funerals
- Memorial consultants
- Chapel of Rest
- Home visits
- Flowers
- Custom wills

2022 - NEW YEAR RESOLUTION

KEEP YOUR VILLAGE TIDY

PARENTS regularly remind children to put litter in a bin provided or take home. (Plastic bottles and cans in a recycling bin)

TEACHERS regularly remind children to put litter in a bin provided or take home. (Plastic bottles and cans in a recycling bin)

RESIDENTS remove any litter on their garden/frontage to prevent blowing onto pathway/road.

RESIDENTS try and ensure bin lids close to prevent any rubbish/recycling blowing onto pathway/road.

BUSINESSES try and ensure bin lids close to prevent any rubbish/recycling blowing onto pathway/road.

BUSINESSES remove any rubbish from frontage to prevent blowing onto pathway/road.

DOG OWNERS be responsible and clean up after your dog and deposit in appropriate bin provided.

SMOKERS extinguish cigarette when finished and put butt in waste bin or take home.

Your co-operation in these matters would be appreciated.

Thank you

SNIP ENDERS

Hair Salon Now Open
Summer Street
Slip End

For a free consultation or
to arrange an appointment

Contact Rachel on
07817315259

HIGH ELMS

Tree Surgery Ltd

01582 840144
07939 623675

www.highelmstreesurgery.co.uk
Email: info@highelmstreesurgery.co.uk

- NPTC CERTIFIED
- POLLARDING
- RESHAPING
- STUMP REMOVAL
- HEDGES TRIMMED, SHAPED & REMOVED
- DEAD WOODING
- REDUCTIONS
- CROWN LIFTING
- LOGS DELIVERED
- TREE REMOVAL
- T.P.O. & PLANNING APPLICATIONS
- TREE SURVEY INSPECTIONS & REPORTS

FREE Estimates & Advice
Fully Insured to £10 million & Approved by Local Authorities

Herts, Beds, Bucks & London + we will beat any written quotation

Registered in England No. 5005470
VAT Reg. No. 847 4261 52

LAIRD MATT DESIGNS

WWW.LAIRDMATTDIGNS.CO.UK

- GRAPHIC DESIGN
- WEB DESIGN
- BUSINESS STATIONERY

@LAIRDMATTDIGNS
 @LAIRDMATTDIGNS

Stoten Gillam

chartered accountants
chartered tax advisers

99 High Street South
Dunstable
LU6 3SF
Tel: (01582) 608601
www.stotengillam.co.uk

"Practical Solutions for Growing Businesses"

**St Andrew's Woodside
Community Coffee
Morning**



Saturday 26th March 2022

10.00 am to noon

at St Andrew's Church

Tea, coffee, conversation and good company

Put 30th April and 28th May in your diary now.

(Dates will appear in PN diary page.)

Drop in at any time. All welcome.

**Opportunity to see some of Paula's lovely
artwork.**

**Contact Steve on 738205 if transport is a
problem.**

AJB CONTRACTS

If you are looking for a local, reliable and trustworthy company, then please get in contact to discuss your project.

- Kitchens - design, supply & fit
- Bathrooms
- Carpentry
- House Refurbishment
- Building Works
- Garage Conversions
- Public Liability Insurance
- Over 35 years experience

 Find us on facebook



Alan Barton
M: 07802 294144 T: 01582 699324
E: alanbarton1@sky.com



YOUR LOCAL GARAGE IN SLIP END

C&C MOTORS IS A LOCAL MECHANIC THAT WORKS AROUND YOU

WE OFFER A FULL RANGE OF SERVICES INCLUDING REPAIRS, SERVICING AND DIAGNOSTICS

MOBILE SERVICE ALSO AVAILABLE
FREE PICK UP AND DROP OFF SERVICE

NEWLANDS FARM
NEWLANDS ROAD
SLIP END

01582 730 237
OR
07966 253 184

WWW.CANDCMOTORS.ORG

Easter Fun Morning

At St Andrew's

Friday 8th April 2022 10.00 a.m. to 1.00 pm



**Easter themed stories, songs and crafts
with an Easter egg hunt
Main session finishes at 12.30 pm but
stay on for picnic lunch.**

For children Year 1 to Year 6, Younger children can stay if accompanied by an adult, and older children are very welcome as helpers.

Parents : If you would like your child(ren) to come please contact Julie Taylor for a registration form on 07841 482119 or email duncan.taylor@btinternet.com as booking is essential for planning purposes.

Registration starts at 9.45 am to ensure a prompt start at 10 am

Free of charge – bring a packed lunch

GARDENING CLUB

We are a small friendly Club which meets five times a year, Monday evenings 8pm at the Village Hall and would welcome new members. The Club AGM was held on Mon. 17th Jan. Chairperson Rosemary Wickens advised there was not a lot to report because we had been unable to hold our usual events. The accounts were distributed which showed the Club was in a healthy financial position, therefore membership was being kept at the current rate of £5 p.a. Visitors and Guests are welcome at meetings at a charge of £2 p.p. The Club continues to sponsor the flower beds outside the bungalows in Crawley Close. The annual programme of garden visits under the National Gardens Scheme is being prepared and hopefully will be ready by the end of March.

After the AGM business was completed, Alison Wilson, joint editor of Parish News, gave a slide show presentation she had compiled for us, of Open Gardens from previous years. Members commented on their gardens also answered questions raised. Thank you Alison.

Planning for the Village Open Gardens Day on Saturday 16th July has commenced. (see poster opposite)

PN Gardening Correspondent

Monday 21st March

Village Hall, 8pm

Gardening Club

Guest Speaker:

Damien O'Dell

"Wimpole Hall and Gardens

New Members Welcome

Guests/Visitors £2



OPEN GARDENS 2022

Slip End hosted its eighth Open Gardens' day in July 2016. This proved to be a popular event and was enjoyed by over 100 visitors. Unfortunately, possibly due to the hot weather in 2018, there was a lack of people willing to open their gardens, therefore the event was cancelled. The planned 2020 Open Gardens also did not take place due to lockdown.

We are now planning for the 2022 event on Saturday 16th July.

Put the date in your diary now!! We are already looking for some gardens, big or small and would emphasise that it is not a competition. Your garden does not have to be anything special; we just want you to be enthusiastic



about it. You would be surprised how many visitors pick up ideas and tips from gardens.

If you live in the Parish and would be interested in opening your garden, please complete details below and return by the end of May to: Rosemary Wickens, 86 Front Street, Slip End or e-mail

rosemary@kididee.plus.com

I would like to 'open my garden' on Saturday 16th July / I would like more information:

Name.....

Address.....

Telephone No.

Email.....

Photography Club

The Photography Club members meet at the Social Club. Usually, we gather twice a month on 1st & 3rd Tuesdays. We are trying to have activities to do such as showing pictures based on a theme or some sort of tutorial or workshop. We hope to return to booking visiting speakers occasionally when practical.



Recently members have done presentations or tutorials about saving and tagging photos as well as a couple of evenings about editing using Photoshop and other software. At the start of March we will be looking at pictures (maximum 3 each) on February's theme — “ the same object with various aspects”. It will be interesting to see what people produce.

We aim to have an exhibition of some of our pictures as part of the Village Day on 9th July.

To find out more about us, please contact us c/o Parish News or Andy Prothero via email:- countrygardensAP@outlook.com

Mutts & Moggies



Kaz Brittain

Dip.dog psy Dip.DG (Inst. L)

07810 890290

muttsandmoggiespets@gmail.com

Qualified &
Experienced in Animal
Management

Mutts & Moggies have been looking after Bedfordshire, Hertfordshire and Buckinghamshire pets for the last 20 years.

We are a mobile service where we come and visit you in the comfort of your own home to care for your pets.

Some of the mobile services we offer are:

- Nail trimming
- Emptying anal glands
- Microchipping
- Cleaning and plucking ears
- Eye cleansing
- Wrinkle cream and balm
- Health checks
- Supplying food, toys and essentials
- etc...

And much more

Chatty Club
Every Wednesday
at
Frog & Rhubarb
12:30—2:30

**Do come along if you would
like to meet others for a
chat over snacks & tea/
coffee**

**See article for
details**

Chatty Club back again at The Frog & Rhubarb

If you are over 60 and would like to get out and about and meet up with other interesting local people, why not take yourself along to The Frog & Rhubarb on a Wednesday lunchtime at 12.30pm.

For just £3.00 you will be served, for example:- sandwiches, chips, spring rolls with cups of tea followed by a large slice of delicious cake and more cups of tea,

It is a lovely group and you would be warmly welcomed if you want to give it a try. There is also a weekly raffle for £1 and any extra funds that that the group make are put towards a trip out. In the past they have been for a boat ride along the Canal or for afternoon tea elsewhere.



For any more info have a chat with Cathy on 457362 or Jean on 421304



Paul is usually on hand to pour out some extra tea and have a chat.

Report by Sue Briggs



A Message from St Andrew's

Did you see the recent report that plants in the UK are now flowering one month earlier than in the past? (A research team from Cambridge used a citizen science database with records going back to the mid C18th, looking at 406 nature species.)

The first signs of Spring fill me with optimism. I love to see the first snowdrops and daffodils nodding their heads in the breeze. However, this early flowering is not good news if it leads to ecological mismatch. There may be loss of biodiversity, with a knock-on effect for farmers.

One of the five marks of mission of the Anglican Communion is to strive to safeguard the integrity of creation and sustain and renew the life of the earth. At St Andrew's we take this seriously, which is why last year we produced a recipe book to encourage us to reduce our meat consumption and thereby our carbon footprint. We take climate justice into account in our spending decisions. We encourage recycling, e.g. the current initiative to collect crisp packets which a friend of Joan Duncombe is turning into groundsheets for the homeless.

As we enter the season of Lent, we have an opportunity to think more deeply about our relationship with creation. Our Lent readings are a 40-day challenge called Live Lent Embracing Justice. If you wish to join in, google it and you should be able to sign up to daily emails. Lent is often a time of fasting, choosing to go without. God spoke through the prophet Isaiah: "Is not this the fast that I choose: to loose the bonds of injustice?" (Isa 58:6). Over the 40 days we will reflect on what practical steps we can take to join in with God's mission to sustain and renew the life of the Earth in our community and the wider world.

At a time when it is all too easy to be cynical, will you join our prayer that "justice may roll down like waters, and righteousness like an ever-flowing stream"? (Amos 5:24).

Julie Taylor, Reader.

PS. We will be giving out posies for Mothering Sunday on 27th March.

Let me know if there is someone who is housebound that you think would appreciate a posy.



St. Andrew's Church - Dates for March

Services held at St Andrew's:



We are pleased to confirm that the church building continues to be open!

However if you would prefer to join the live service virtually, Nick has set up a Zoom link which is open to all. You can join by putting in the number 878 5926 2657 and the passcode 664663 to Zoom or by clicking the link

<https://us02web.zoom.us/j/87859262657?pwd=dTdad291VDk2anA5aGtmdnFCN3kzQT09>.

Services held at St Andrew's:

March 2nd 7.30pm: Ash Wednesday Service

March 6th 10.30am: Informal Communion

March 13th 10.30am: Morning Praise

March 20th 10.30am: Holy Communion

March 27th 10.30am: Family Service – Mothering Sunday

We are reintroducing a monthly Family Service on the last Sunday of each month. Of course, all ages are welcome to every service but the service content will be especially accessible to all generations at the Family Service.

Little Stars

We are pleased to confirm that Little Stars continues, and starts at 10.30am each Wednesday and will run

on:-

2nd 9th 16th 23rd & 30th March.





Aley Green Methodist Church



Dates for March

Tues 1st Mar 10am—1pm Pancakes and Company

Fri 5th Mar 7:30pm World Day of Prayer Service (All Saints, Caddington)

Lent 1 Sun 6th Mar 10:30am Service led by Shepherd Kombo and Sunday School

Mon 7th Mar Lent Fellowship 1 "Have I got news for You"

Lent 2 Sun 13th Mar 10:30am Service led by Geoff Best

Mon 14th Mar Lent Fellowship 2 "So what? The implications of the Resurrection"

Lent 3 Sun 20th 10:30am Service led by Andrea Als-McClean

Mon 21st Mar Lent Fellowship 3 "Let him easter in us"

Lent 4 Sun 27th Mar 10:30am Prayer & Praise led by Alison Wilson

Mon 28th Mar Lent Fellowship 4 "Celebrating and praying Easter"

Wed 30th Mar Coffee Evening in aid of A Rocha UK

Lent 5 Sun 3rd Apr 10:30 Service led by Peter Baker and Sunday School

Mon 4th Apr Lent Fellowship 5 "A risen Church"

Tues 5th Apr 10-12 Cakes and Company and Little Lambs Club

+++++

Thank you for all your support since Christmas. The January coffee evening raised £100 for NOAH (who support homeless youngsters in Luton). The Carol Service, which we finally held of 23rd January, raised £142.30 for Action for Children.

In February we held our first Cakes and Company of the year. It was good to welcome a crowd with lots of natter and laughter. We hope you will join us for “Pancakes and Company” on Shrove Tuesday, 1st March. We will be selling bacon rolls as well as pancakes and will have stalls set up for Preserves, Cake, Bric-a-brac, and Tombola.

Do come and join the World Day of Prayer service. Refreshments will be served afterwards.

The Lent Fellowships are held in our church but are ecumenical. Friends from most of the churches in the villages join together for prayer and discussion. Everyone is welcome.

At our April Cakes and Company on 5th April, we are starting up our Little Lambs Club from 10:30 to 12:00 for babies and toddlers:- story time, singing, refreshments and playtime.

If you have a little one, do come along and join us. There is no charge!

Keep safe and well!

Yours in Christ,

Ann Meader and all at Aley Green



Gardening Notes *by Russell Sprout*

As the days start to lengthen and the weather improves so the garden beckons once again, and I am sure it will be a relief to everyone to be able to get outside again and get on with jobs in the garden.

Lawns will need some attention after the rigors of winter, new lawns need a final raking of ground dug in the autumn to a fine tilth for sowing seed. Established lawns will benefit from a good scarifying with a lawn rake or an electric scarifier to remove dead grass, moss and thatch. Any worn areas can be reseeded and any sunken areas levelled and seeded to bring it back to a good condition for the year ahead. The first time you cut don't cut too short, lower the blades over the next few mowings. Trim and straighten edges angling the cut slightly away from you to avoid it crumbling away.

Plant roses early in the month and prune established plants during a frost free period, cutting out all dead wood and any branches crisscrossing to open up and shape the bush to a bowl shape. Don't be afraid of cutting a rose back too far as they benefit from a really good reduction of the previous year's growth to produce strong new shoots.

Dahlias and chrysanthemums over-wintered in the greenhouse will have shoots on them by now and cuttings can be taken when they are approximately 3 inches long. Gladioli corms can be planted later this month and if sown over the next 6 weeks will give a longer flowering season. Sow between 4-6 inches deep and you will avoid the need of staking them. Sweet peas which were sown in autumn and over-wintered in pots or brought from a nursery will need to be planted out as soon as the weather permits. They make an effective display when grown in clumps and supported with pea sticks or a cylinder of netting. If you have any large clumps of snowdrops they can be dug up and split into small bunches and replanted straight away, but should only be done about every fifth year.

Main crop brussel sprouts can be sown early in the month in drills $\frac{1}{2}$ inch deep for planting out at the end of April. Parsnips can also go in as soon as the soil is dry in drills $\frac{1}{2}$ inch deep and 15 inches apart, if you sow 3 seeds at 6 inch spacings this will make it a lot easier when it comes to thinning out.

Tomatoes sown last month under heat will need pricking out now or they will become weak and spindly. Finish pruning established fruit trees and bushes as soon as possible in the month. Onion sets can be planted towards the end of the month or early next month, but shallots should be planted as soon as possible if not already done. Leeks can be sown this month for transplanting in June and summer spinach sown this month will be ready in May/June. Sow early rounded peas and broad beans until mid month. Early potatoes can be planted from the middle of the month 9-12 inches deep and 14 inches apart, but as they shoot above ground they will need to be protected from frost.

Finally, the Gardening Club are planning to hold their Open Gardens event this year and would like to hear from you if you are interested in opening your garden, the date is Saturday 16th July. It's not a competition, it's just a fun day sharing your garden with other people and helping the Gardening Club to survive after a difficult 2 years. Contact Rosemary on 423622 for more information, or to book your place.



The Good Neighbour Scheme organised a Cheese and Wine evening for the volunteers (and their partners) to say thank you for their help recently.

There are more than 20 volunteers at the moment who do different tasks for those who need assistance, including answering the phone to arrange helpers. It was good to meet a few of the other volunteers and have time for a chat. *(Here are a few of those who attended.)*

The food provided was lovely. Thank you to the Committee members who organised the evening!





Pet Sitting Dog Walking Drop-In Checks Food & Supplies

**Fully Insured Pet First Aid Trained 15+ Years' Experience NARPS Registered
Dedicated Carers Veterinary Care Skills DBS Checked Multiple Species Care**

Pet Care That Comes To You Providing a professional dog walking and pet sitting service. Based in Slip End, also covering, Caddington, Markyate, Flamstead, Kensworth, Harpenden and the surrounding areas.



LIV for PETS

Dog Walking and Pet Sitting Services

**Contact Olivia
07767 473203**

**Olivia@livforpets.co.uk
www.livforpets.co.uk**



**NEVILLE
FUNERALS**

We believe good value and excellent service go hand in hand.
NEVILLE. Because there is a difference.

LUTON

Neville House, Marsh Road, Leagrave LU3 2RZ

t: 01582 490005

e: luton@nevillefuneralservice.com

www.nevillefuneralservice.com



Slip End Book Club

The Book club is a small group of people who enjoy reading. We are very informal. The main aim of our group is to suggest and select some different books to read that we might otherwise have ignored. Sometimes these are light-hearted. On other occasions the books are more intellectual or about challenging topics.

We meet once a month, usually on the last Tuesday of the month at the Frog and Rhubarb from about 8pm. We usually have some discussion about the book and the subjects connected, over a suitable beverage! More often than not the talk moves to other subjects and also recommendations of other books, films, TV and more...

New members are welcome. Please contact us through Parish News or come along to the pub one month.

February's book was "The Paris Library" by Janet Skeslien Charles

March is "The Serial Killer's Wife" by Alice Hunter

April is "Luckenbooth" by Jenni Fagan



Happy Reading!

Chiropodist

State Registered

**Home visits Evening &
Weekend appointments**

Keith Appleby BSc (Hons), MChS, SRCh

Telephone: 01582 873136

**A. McClelland
Pest Control**



For fast response call
Mobile 0777 494 8415
or office 01582 872158

email: amcclellandpestcontrol33@gmail.com

Charisma

Hair & Beauty Salon

**Ladies &
Gentlemen
01582 722801**



Opening Times

Mon: Closed
Tues: 9-5
Wed: 9-1
Thurs: 9-7
Fri: 9-6
Sat: 8-3

Easy Parking!

43B Elm Avenue, Caddington

www.charisma-caddington.com



Find us on facebook

**If you would like to
advertise, please contact**

**Jo Moss 01582484373
or
Parishadverts@gmail.com**

Caddington W. I.



We had a talk on Downton Abbey by Mike Payne. The talk was very informative. Many of us remembered the celebrities in the TV series. The clothes were fashionably stylish for the setting. It was surprising how many large mansions and houses were used in filming. A great deal of care was taken to get the correct buildings, walls, and door sets historically correct.

We are going to be providing refreshments for St. George's Day on the 23rd of April. Any cake makers out there? We would like donations of cakes for this event. On that same day, Carol Jones will be unveiling a plaque for the village. The event will be held on the Green so we are looking forward to this.

Later in the year, Dunstable Ladies Choir will be singing for us.

We are now able to attend County events. Our Darts team is practicing ready for when their season starts.

For the Jubilee in June, our members are making flowers in paper, felt, knitting, or crochet ready to decorate All Saints Church. There will also be many street parties in the Village and other events.

Our meeting on 1st March will be a talk by one of our members, Rita Weber, all about her Aunt who lived in Chapel Street Luton and the hat factories. There will also be a Bag Auction to raise funds for our W.I.

We have a very full Programme for 2022. In April, our evening is called 'Laughter in the Village' by Bob Harding-Jones.

May, our meeting will be a talk on The Mercy Ships with Ken Brazier.

Caddington Women's Institute meets on the First Tuesday of the month at 7.30 p.m. at the Caddington Sports and Social Club in Manor Road, Caddington.

New members will be made most welcome.

Linda Edwards (07761 340108)



INKERMAN

BUILDING & ROOFING Co.

EXTENSIONS - CONVERSIONS - RENOVATIONS

- ✓ Restoration ✓ New Build
- ✓ Flat & Pitched Roofing
- ✓ All General Building Work
- ✓ Painting & Decorating
- ✓ Electrical Works & Plumbing
- ✓ Brickwork Contractors
- ✓ Patios & Driveways ✓ Fencing
- ✓ Groundworks/Drainage
- ✓ Insurance Work
- ✓ Garage Conversions
- ✓ Public Liability Insurance

EXTENSIONS • CONVERSIONS • RENOVATIONS

www.inkermanbuilding.co.uk

**The Complete Design
Plan-Completion Service Included**



Tel: 01727 835702 or Mobile: 07774 955255

Tel/Fax: 01582 876509

Email: info@inkermanbuilding.co.uk • 46 Church Road, Slip End, Bedfordshire LU1 4BJ



Local Independent Locksmith

Call Steve—

01582 318307 / 07580 716415

- FREE Lock / Security Review
- Lock Fitting / Upgrades
- Entry using Non-Destructive methods
- Competitive Pricing
- Police Vetted



SJ Locks

www.SJLocks.co.uk



@SJLocks



A warm welcome always awaits members and their families at...

Slip End

SOCIAL CLUB

Be social, make it your local!

**BIG SCREEN
LIVE SPORTS**
sky SPORTS BT Sport

DARTS
FREE POOL
Monday to Friday only

DOMINOES
CRIBBAGE

☺ **HAPPY HOUR** ☺
Monday to Friday 4-7pm

BINGO WEDNESDAYS

**LIVE ENTERTAINMENT
EVERY MONTH**
GOLF SOCIETY
FREE WI-FI
USUAL CLUB PRICES

OPENING TIMES
Weekdays: 4pm to 11pm
Saturday:
12 Noon to 12 Midnight
Sunday: 12 Noon to 11pm



TOP BAR



BIG SCREEN SPORT



SNUG BAR



DARTS IN ALL BARS



TOP BAR POOL TABLE



Why practice

Kickboxing?

These are just some of the benefits that can come from regular practice of Kickboxing by people of **ALL** ages:

- A practical method of self defence
- Promotes physical fitness, strength and flexibility
- Builds confidence and awareness
- Strong social aspect where many friendships can be made
- Discipline
- Fun

Classes start from Monday 20th September:

Children (ages 6 – 15)
Women only (16+)

Monday 6.15pm – 7.15pm
Monday 7.30pm – 8.30pm

First lesson free

Location:

Find us at the brand new Lyons Community Centre in Caddington Woods,
33A Mallard Crescent,
Caddington,
Luton.

Teasha Mitchell

2nd Dan Blackbelt Jujitsu
1st Dan Blackbelt Kick Boxing
DBSchecked

National Blackbelt Registered
Member of Cobra Martial Arts Association



Inspiring
Confidence

To book or for further information please email Sensei Teasha Mitchell
teasha@shinraimartialarts.com

ALL ABOUT PLANNING

Planning applications submitted within the Parish since January 2022

Application CB/22/00179/FULL submitted 19th January 2022

4 Harrier Court, Woodside Road, Woodside, LU1 4DQ

Change of use from offices (B1/E) to dwelling (C3)

Decision: Not yet decided

Application CB/200386/FULL submitted 2nd February 2022

66 Markyate Road, Slip End, LU1 4BX

Demolition of existing detached garage. Single storey side and rear extension. Widened vehicular crossover access and removal of front porch.

Decision: Not yet decided

For further information on applications visit www.centralbedfordshire.gov.uk >view planning applications. If you wish to comment on an application email: planning@centralbedfordshire.gov.uk

Update on potential Newlands Park development Residents will recall that Parish News has previously reported on the proposal for the Newlands Park development on greenfield land adjoining the M1, the A1081 AirportWay and adjacent to Newlands Road. This development was seen as a major financial contributor to funding the new Power Court site for a stadium for Luton Town football club. There have been a number of “holdups” in pursuing these plans but in January 2022 Luton Borough Council gave approval to two applications for what has been described as a North site and a South site. The North site is for commercial and business use including retail and leisure, commercial floor space and parking. The South site is for commercial and business floor space, public art, a gateway facility and parking.

Although recommended for approval by Luton Borough Council the final decision on moving forward will be made by the Secretary of State for Levelling Up, Housing and Communities. Anyone interested in reading more will find a number of web sites available to view by googling “Newlands Park development “. Parish News will endeavour to keep residents aware of any future decisions made.

CRIME REPORT



Parish Crime Statistics



Figures for January 2022

Aley Green – None

Pepperstock – None

Woodside - None

Slip End

Theft from a motor vehicle – 3

Assault without injury – 1

TOTAL - 4

Caddington

Assault without injury – 3

Assault with injury – 2

Sexual – 1

Stalking – 1

Race or religiously aggravated criminal damage – 1

Interfering with a motor vehicle – 1

Shoplifting – 1

Malicious communications – 1

Theft or unauthorised taking of a motor vehicle – 1

Other criminal damage – 1

Possession of control drugs (cannabis) – 1

TOTAL - 14

CRIME SCENE DO NOT CROSS CRIME SCENE DO NOT CROSS CRIME SCENE DO NOT CROSS CRIM

Diary - If you would like your events included, please contact the Editor

What's going on in 2022

March

- Tues 1st** Pancakes & Company Aley Green Methodist 10am—1pm
Wed 2nd **Every Wednesday - Chatty Club Frog & Rhubarb** 12:30—2:30
Sat 5th AIRPORT CONSULTATION—Village Hall 10:30am—3:00pm
Mon 7th Parish Council Meeting Village Hall 7pm
Wed 9th Chatty Club
Wed 16th Chatty Club
Mon 21st Gardening Club Village Hall 8pm
Wed 23rd Chatty Club
Sat 26th Community Coffee Morning St. Andrew's Church 10:00—12:00
Wed 30th Chatty Club

April

- Wed** **Every Wednesday - Chatty Club Frog & Rhubarb** 12:30—2:30
Fri 8th Easter Fun Day St. Andrew's Church 10am—1pm (see poster)
Sat 30th Community Coffee Morning St. Andrew's Church 10:00—12:00

20th Jun Gardening Club Village Hall 8pm

9th July **Village Day** **SAVE THE DATE!**

16th Jul **Village Open Gardens** 11-5

19th Sep Gardening Club Village Hall 8pm

Parish News Online

For those who like to read magazines on tablet / screen, Parish News can be found online at:-

www.slipendparishcouncil.co.uk and

www.slipend.co.uk where historical copies can also be found.

Bin Collections— March

Black bin and Glass — 4th, 18th Mar, 1st Apr

Orange bins and Green— 11th, 25th Mar

Food Waste bin — Every Friday



The CBC website states that Garden Waste will restart from Monday 28th February.

COMMUNITY AND SERVICES

Services:- **Good Neighbour Scheme:** 07513 37 24 15
Shop at the Crossroads 401069 Mon—Sun 7.00 to 19:30
Slip End Garage Markyate Road, 456888
Doctor Caddington Surgery 725673
Doctor Markyate Surgery 841559
Schools: **Slip End Village School** 720152 **Manshead** 679400
Caddington Village School 726058 **St Mary's Catholic Primary** 602420

Churches:-

St Andrew's Church

Rev Nick Mwandia

01582 253537

07398663729

revstandreww@gmail.com

Julie Taylor (Reader)

01582 413912

Mob 07841482119

duncan.taylor@btinternet.com

Wardens:

Steve Baird 738205

Susan Wiltshire 727000

Aley Green Methodist Church.

Minister:

Rev Nigel Bibbings

Senior Steward:

Ann Meader 733668

Sport:-

Bowling Club 412506

Football

517042 or 07515687160

wayne@dngsales.co.uk

Pepperstock Archers

615216

Email LBP121@aol.com

(Lee Prebble)

Tennis 733253

Runners Peter Barber

07587 89260.

Slip End Veterans Football

Wayne Leslie (see football)

Line Dancing —Jean

Anderson 01582 452851

Community:-

Gardening Club 423622

Photography Group

countrygardensAP@outlook.com

Brownies 723109

Beavers 07956 833488

Cubs & Scouts 418014

Playgroup/Pre-school

Julie Brocklehurst

07791354541

S.E.A.D.A 414796

FoSELS 07810002942 (PTA)
or fosels@outlook.com

Women's Institute

01582 737036

Chatty Club Jean Turner 01582

421304 or Cathy Rose 01582

457362

Book Club (via Parish News)

www.slipend.co.uk
Slipendparishcouncil.co.uk



Items for the next issue (April) to us by 15th March

(Editor — Matt) Adverts by 10th please

Any delivery problems? Contact Alan Buttery at 1 Claydown Way

(01582 724527), alanjan4546@gmail.com

Anything interesting to report about village activities, photos, holidays, etc.

Please contact us, letters and e-mails are encouraged.

Views expressed by our contributors are not the Editors' own.

Articles should be sent by the 15th of the preceding month to the Editors - Alison

Wilson, 23 Claydown Way or Matt Freeman 20 Crawley Close or e-Mail

parishnews@slipend.co.uk Advertising queries to Jo Moss 01582484373 or

Parishadverts@gmail.com

Parish News is grateful to our advertisers for their contributions. Please support them.

YOUR PARISH COUNCILLORS

Clerk to Parish Council — Peter Segal 526594 (9am to noon weekdays)

clerk@slipendparishcouncil.co.uk

| | |
|--|------------------------------|
| Paul Cooper - p.cooper@slipendparishcouncil.co.uk | 07703 599006 (Chairman) |
| Sarah Minnighan - s.minnighan@slipendparishcouncil.co.uk | 07868 742904 (Vice-chairman) |
| Carol Beeton - c.beeton@slipendparishcouncil.co.uk | 405597 |
| Carol Brennan - c.brennan@slipendparishcouncil.co.uk | 453049 |
| Trefor Hooker - t.hooker@slipendparishcouncil.co.uk | 07773 159275 |
| Simon Patterson - s.patterson@slipendparishcouncil.co.uk | 07767 615714 |
| Paul Shaw - p.shaw@slipendparishcouncil.co.uk | 07957 188947 |

WHO DO I CALL?

Fly Tipping (CBC) 0300 300 8000 Customer.Services@centralbedfordshire.gov.uk

Road issues:- www.centralbedfordshire.gov.uk/reportit

Police 101 **Aircraft noise** 395382 **Airparks** 393321

Water leaks 0800 3765325 **Cold Calling** 0345 4040506

Out of hours noise 0300 300 8098 **Street Lighting** 0300 300 804

GOOD NEIGHBOUR SCHEME 07513 37 24 15

Your Central Beds Councillors



Cllr Kevin Collins

kevin.collins@centralbedfordshire.gov.uk



Contact
details



Cllr Eddie Perry

eddie.perry@centralbedfordshire.gov.uk

MP's

Contact details
Rachel Hopkins



*Her local office is located at:
3 Union Street Luton LU1 3AN
For advice, surgery appointments
call 01582 457 774*

PETER EDWARDS HALL & PLAYING FIELD

Ideal for children's & adult's parties, meetings, etc.

Kitchen facilities with catering service available

Available for various sports activities

Excellent sports changing facilities

Facilities for the Disabled

For Bookings: please contact

PEHall@slipendparishcouncil.co.uk

SLIP END VILLAGE HALL

Your Village Hall

for Dances, Receptions & Parties

Facilities for the disabled

For bookings contact

*villagehall@slipendparishcouncil.co.uk
or Gill Plummer on 01582 723109*

ESTABLISHED 1939



NEW SALES



We always have great offers available including high deposit contributions, upgrade packages, free service packs and highly competitive finance options.

To find out more about our latest offers, visit us online or call our sales department now.



USED SALES



Here at Slip End Garages we have a fantastic choice of used cars for sale. Our stock is always changing and currently includes used Citroën, Subaru and Isuzu vehicles.

We are always updating our website with our current stock visit us online or call now.



PARTS



Whilst being one of the largest Citroën Dealerships in the Home Counties we also have one of the largest supply of vehicle parts and accessories available.

Whatever you need, we are here to help, just give our parts department a call.



SERVICE



We have over 73 years of Vehicle maintenance experience with a full collection and delivery service available to our customers as well as provide courtesy cars for service and MOT.

Call our service department and we will take care of all of your service requirements.

LOCAL RESIDENTS RECEIVE A FURTHER £200 DISCOUNT ON ALL NEW AND USED VEHICLES + SPECIAL RATES ON ALL SERVICING

Slip End Garages 01582 456888

Markyate Road Slip End, Luton, Bedfordshire, LU1 4BU

Our Service Centre is located in Grove Road, Slip End

Email: info@slipendgarages

WWW.SLIPENDGARAGE.CO.UK