

**July  
2024**

**Parish  
News**

**Aley Green Pepperstock  
Slip End Woodside**

**THE COMMUNITY MAGAZINE FOR YOU!  
WITH INFORMATION AND NEWS FROM YOU**  
delivered to the whole of the Parish

## Editors' Notes

### **ELECTION**

It has fallen to me to edit this months Parish News Magazine and once again to announce the candidates for the forthcoming General Election. On the opposite page is a list of the candidates and the documents required to enable you to vote.

### **BBC Radio 1 Big Weekend.**

Apparently this went well, although where I lived I could occasionally hear the DJ's and the music. Mainly the bass drums. See the Parish Council report on page 6.

### **Newlands Road Closure.**

I understand that this will be for a long time, again please see the Parish Council Report on page 6.

### **231 Bus Route**

By the time you read this, the new 231 service will have been running for a month. You should have had a leaflet with the timetable from Central Bedfordshire Council. The Time Table is printed on page 13.

### **D-Day Celebrations.**

On pages 16, 17 and 33 are the photographs taken at the D-Day celebration, tea and cake afternoon held on June 8th in the village hall. There were displays of war time memorabilia and music of the era. The event was well attended with over 70 people dropping in.

### **Village Day.**

Don't forget the Village Day on July 6th. This will have the usual attractions, please see advert on pages 14 and 15.

### **Brownies**

Unfortunately I have to report that as of July 17th, the Slip End Brownies will be no more, please see article on page 4.

### **Soup and Sarnie**

There is no soup and sarnie at the Rising Sun during July, August and September.

### **Finally**

There is no Parish News Magazine in August.  
Deadline for the September issue is August 15th and Matt will be editor.

# ELECTION JULY 4th

## Luton South and South Bedfordshire Constituency

The constituency boundaries have been altered and our constituency has been renamed as above.

Below is a list of the candidates and their parties, followed by a list of ID requirements in order to cast your vote.

|                                |                          |
|--------------------------------|--------------------------|
| Edward Carpenter.              | Green Party              |
| Dominic Griffiths.             | Liberal Democrats Party  |
| Rachel Hopkins.                | Labour Party             |
| Norman MacLean.                | Reform Party             |
| Attiq Ahmed Malik.             | Independent              |
| Yasin Rehman.                  | Workers Party of Britain |
| Mark Anthony Gaius Versallion. | Conservative Party       |

In order to vote you will need to have to produce one of the following documents:

A Passport issued by the UK, any of the Channel Islands, the Isle of Man, a British Overseas Territory, an EEA state or a commonwealth country.

A driving licence issued by the UK, any of the Channel Islands, the Isle of Man or an EEA state.

A biometric immigration document.

An identity card bearing the Proof of Age Standards Scheme hologram .

An Older Person's (Senior) Bus Pass.

A Blue Badge.

---

# Brownies

There has been a Brownie Pack in Slip End for 100 years, but it is with great sadness that we have to that, as from July 17th, there will no longer be a Brownie Pack in Slip End, as the number of members has decreased.

On Wednesday 10th June, we are inviting anyone who has been a Brownie, or has helped in one way or another, to come to the Village Hall from 6:30 to 7:30 for a drink and a cake.

Debbie Farmer has been with the Brownies in Slip End for 15 years and I myself have been associated with the Brownies for over 53 years as Brown Owl and now as Wise Owl.

We hope to see as many as possible on July 10th for this sad occasion.

Gillian Plummer

Wise Owl

---

**KPI WASP NEST TREATMENT**  
**CALL PAUL 07973 910626**



Most pharmacies can help you with **seven common conditions** without needing a GP appointment

- **Sinusitis**  
(adults and children aged 12 years and over)
- **Sore throat**  
(adults and children aged 5 years and over)
- **Earache**  
(children and young adults aged 1 year to 17 years)
- **Infected insect bite**  
(adults and children aged 1 year and over)
- **Impetigo**  
(adults and children aged 1 year and over)
- **Shingles**  
(adults aged 18 years and over)
- **Urinary tract infection**  
(women, aged 16 to 64 years)



Ask your pharmacy for more information about this free\* NHS service

**Visit your  
Pharmacy First!**

\*NHS prescription charge rules apply where a medicine is supplied



# PARISH COUNCIL UPDATE

## **Radio 1 Big Weekend**

The weekend was a great success for Luton Borough Council and the feedback we've received is that the organisation was excellent, there were some areas for improvement and on the whole it was a great weekend, enjoyed by both close residents and folks from further afield.

My thanks to our residents for their understanding, patience and cooperation. And further thanks to Councillors Kevin Collins and Vicky Malone for their input and support leading up to the event.

## **Newlands Road Closure**

Predominantly in Luton Borough Council's jurisdiction. We were NOT consulted on this closure. The traffic will have a massive impact on our parish and again I appreciate residents being cooperative and understanding of the situation. Its by no means ideal, but I've been advised its to deal with, amongst other things, a major gas pipeline and the length of closure is as much a contingency timescale as anything.

## **Fly Tipping**

It would seem that we are back on the fly tipping hot spot map at the Spiers field entrances on both sides of the road at Front Street leading into Pepperstock. At every opportunity the tips are reported by either myself, other councillors or residents and I thank them for doing so.

Again, I would like to reiterate to residents the quickest way to report any incidents of fly tipping is using the FixMyStreet app or website. You can report anything on it – potholes, street lights, paving, overgrown verges, fly tipping – the options are there, and it will keep you up to date with progress on the incident you report - **[www.fixmystreet.com](http://www.fixmystreet.com)**

## **Residents Parking Scheme**

I continue to chase CBC for their response to our survey and will have more information on this matter in the latter quarter of this year.

## **Grass Cutting**

We've had 'No Mow May' which is designed to encourage bird and bee habitats. I have requested that these grass verges be attended to, particularly at major road junctions and by the time you read this, hopefully they'll have been cut.

## **Flooding**

At the end of May at 8.30pm during a fairly heavy downpour, I distributed Parish Council flood and road closed signage at Grove Road and Mancroft Road. Mancroft Road water levels increased rapidly over night causing high flood water combined with sewage at this location, but it drained quite quickly. Work has started in Lower Woodside to improve water run off from fields and drains have been improved or replaced to assist with water run-off.

Grove Road sadly hasn't had this attention. Despite the pavement being raised at this location it has made little or no difference; the area was so badly flooded that even the

grass verge was impassable. I have been in regular contact with CBC about this location but disappointingly they've advised there is NO funds available in this financial year, so this location will continue to flood.

### **Woodside Road Speeding**

Lower Woodside residents have had horrendous experiences with fast and potentially drunk drivers speeding in this location, causing accidents so damaging that they have written off residents vehicles parked not only on the road but on their drives.

Clr Mallone suggested and Parish Council agreed for a speed strip to be fitted in this location to gather speed statistics, which will give an indication of the issues at this location, and is the first step to engaging Central Beds in discussions about how this location can be improved. The speed strip will be sited but we will not advise when – that could alter the stats. This will not be a quick fix, but it is on our radar.

### **Hanging Baskets and Troughs**

By the time this PN reaches your door hopefully our hanging baskets and troughs will be in situ. They are always well received by both residents and drivers passing through the parish. I'm aware that some residents have asked for baskets at their location and whilst we would love to furnish the whole parish with them, it comes down to cost but also availability of suitable lamp posts (telegraph poles are not suitable) which have to be weight tested and must not be a 'hinged' lamp post. Eventually Central Beds will replace all their lamp posts with hinged versions, which are not robust enough to support our hanging baskets, at which point we will have to abandon our hanging baskets and increase our troughs throughout the parish. However we have agreed a further 3 year contract with our current contractor, Plantscape from next year.

### **D-Day 80th Anniversary**

My thanks to our Clerk, Tracey, for doing a sterling job of organising the 80th Anniversary D-Day Remembrance Tea at the Village Hall on 8th June 2024. Everyone who attended said what a lovely couple of hours, the attention to detail was lovely, and the information boards Tracey put together were so informative. Thanks to the ladies that helped her, but all credit to the clerk – well done Tracey!

### **July Meeting – New Date**

Due to several members being unable to make the July meeting resulting in us unable to meet a quorum to vote or approve anything, members agreed to move the **meeting to Monday 8<sup>th</sup> July 2024** (from 1<sup>st</sup> July), kick off at 7.00pm.

**Clr Sarah Minnighan - Chairman**

# Slip End Preschool



Open Monday - Friday  
(Term time only)

🕒 9am - 3pm daily

📍 Slip End Village Hall

Children aged 1-4 years

- ✓ Extra-curricular activities
- ✓ High staff-child ratio
- ✓ 2, 3 and 4 year funded places
- ✓ Rated **GOOD** by Ofsted  
(September 2022)

For more information please contact  
**Hayley Bolton** on **07889 824367**

Central  
Bedfordshire



## GCSE ENGLISH TUITION

The exams are coming!

One-to-one tuition for 15/16 year olds (or adults) preparing for GCSE English Language and/or Literature exams by experienced teacher, with exam board experience. At your home, or online.

Tailored and personalised lessons  
Homework set and marked  
Exam practice

From £20 per hour.

Contact Lynn to arrange a consultation.  
Email: [gcserehome@gmail.com](mailto:gcserehome@gmail.com), with any queries  
or to arrange a free consultation.

## To advertise here

Contact

Jo Moss on **01582 484373**

Or email

[Parishadverts@gmail.com](mailto:Parishadverts@gmail.com)

## TGB TREECARE LTD

### Tree Surgery &

### Powered Access Hire

WE SERVE BEDFORDSHIRE,  
HERTFORDSHIRE &  
SURROUNDING AREAS

FULLY  
INSURED

FREE  
QUOTATIONS

Based in Woodside, Near Caddington, Luton, Beds.

07721 032669 | 01582 410 597  
[info@tgbtreecare.co.uk](mailto:info@tgbtreecare.co.uk)  
[www.tgbtreecare.co.uk](http://www.tgbtreecare.co.uk)







# Aley Green Methodist Church



## Dates for July & August

**July:-** Tues 2nd July 10-12am Cakes and Company and Little Lambs Club (story time 10:30am)

Sat 6th Stalls at Slip End Village Day

Sat 6th 10am Prayer Breakfast led by Liz Higgens

Sun 7th Jul 11am Open Air Circuit Worship at Dunstable Downs. (At The Square Methodist Church if wet).

Sun 14th 10:30am Morning Service (Local Arrangement—Ann Meader)

Mon 15th 7:30pm Ecumenical Fellowship Meeting led by Jo Prowse

Sun 21st 10:30am Morning Service led by Michael Adams Sunday School

Sun 28th 10:30am Morning Service (Local Arrangement—Deirdre Smith)

Wed 31st 7:30pm Coffee Evening in aid of Action for Children

**August:-** Sun 4th Aug 10:30am Morning Service led by Rev Jenny Spouge Sunday School

Tues 6th 10-12am Cakes and Company and Little Lambs Club (story time 10:30am)

Sun 11th 10:30am Morning Service with Holy Communion led by Rev Nigel Bibbings

Sun 18th 10:30am Morning Service led by Peter Baker Sunday School

Mon 19th 7:30pm Ecumenical Fellowship Meeting led by Jo Prowse

Sun 25th 10:30am Morning Service (Local Arrangement)

Wed 28th 7:30pm Coffee Evening in aid of World Vision

Sun 1st Sep 10:30am Morning Service

Tues 3rd 10-12am Cakes and Company and Little Lambs Club (story time 10:30am)

Advance date:- Sun 15th Sep 4pm Ecumenical Harvest Service at St Thomas' Catholic Church

Sunday School and Little Lambs Club will always be happy for new members to come along and see what we do. Little Lambs Club welcomes those with babies or toddlers to join for stories and craft. During school holidays older children are also very welcome to come along.

Everyone is welcome to join any of our services and activities. You will be given a warm welcome.

*God bless,*

*from all at Aley Green*



## GARDENING CLUB

The May Gardens visit was to Steppingley Village gardens. It is a picturesque Bedfordshire Village on the Greensand Ridge close to Ampthill and Flitwick.

The eight gardens offered an interesting mix of planting styles and design including pretty courtyards, cottage garden style perennial borders, ponds, a Victorian well, a herb garden also countryside views. (See photos below)

The June Garden visit was to Redbourn in Bloom, when approx. 20 gardens opened, report next issue.

Future garden visits are to the following:-

- Sun. 7 July. Soulbury Village Gardens, Leighton Buzzard
- Sun. 21 July. Gade Valley Gardens, Dagnall Rd, Gt Gaddesden
- Mon. 26 Aug. 15 Douglas Rd, Bedford
- Sun. 1 Sep. 20 & 30 St Stephens Ave, St Albans
- Sun. 8 Sep. Celebration Garden, Ayletts Garden Centre, St Albans

Visits depart from the Village Hall Car Park at 1.30pm.

PN Gardening Correspondent





## Anyone for Tennis????



Slip End Tennis Club was formed in 1987 and is affiliated to the Beds Lawn Tennis Association. The Club has two hard courts, with floodlights at Slip End Playing Fields, Church Road, Slip End. The courts have recently been refurbished and repainted.

It is a small friendly club with approx. 80 members. Current costs for new members are: Junior £15 (Up to age 16) Adult £35 and Family £60.

Club members have priority in the use of courts, except when either matches are to be played or coaching taking place.

Club night is on Wednesday evenings from 7pm, and Sunday mornings from 10.0am, to which all members are welcome. Coaching is provided by our LTA coach, Sally Parry. Seniors Tuesdays, 6.30-7.30pm and Juniors on Fridays, 4.30-5.30pm. Members £5 and Non-Members £6 per session. Ladies and private coaching is also available.

Give Sally a call (07979 433688)

Any enquiries about the club can be made by telephone or e-mail to:-

Steve Lyons, Secretary (01582 414162)

[stevesuelyons@aol.com](mailto:stevesuelyons@aol.com)

Peter Smith, Chairman (01582 733253)

[peter.smith813g@gmail.com](mailto:peter.smith813g@gmail.com)

Mon 16th September  
Village Hall, 8pm

**Gardening Club**

Guest Speaker -  
Chris Shortall

**Entomology at Rothamsted Research"**

New Members Welcome  
Guests/Visitors £2





**The Good Neighbour Scheme**  
**Summer Tea Party**

**Wednesday 24th July 2024**  
**Slip End Village Hall**  
**2.30pm to 4.30pm**



**Strawberries ~ Cakes**



**Refreshments ~ Raffle**



**Call 07513 372415**  
**for transport**

# 231 Bus Time Table From 3rd June 2024

**SOUTH BEDS  
DIAL-A-RIDE**

**231**

**Pepperstock - Slip End - Caddington - Dunstable**

**Mondays to Fridays**

**from 3rd June 2024**

Notes:

|                                   |      |      |
|-----------------------------------|------|------|
| Pepperstock, Caravan Park         | 0855 | 1125 |
| Slip End, Prebendal Drive         | 0900 | 1130 |
| Woodside, Grove Park Road         | 0902 | 1132 |
| Aley Green, The Chapel            | 0904 | 1134 |
| Caddington, Culworth Close        | 0905 | 1135 |
| Caddington, Manor Road, Stop A    | 0908 | 1138 |
| Dunstable, Southwood Road         | 0914 | 1144 |
| Dunstable, The Square, Stop S1    | 0920 | 1150 |
| Dunstable, Church Street, Stop P2 | 0922 | 1152 |
| Dunstable, Asda                   | 0925 | 1155 |

Notes:

|                                 |      |      |      |
|---------------------------------|------|------|------|
| Dunstable, Asda, Stop J1        | 1055 | 1515 | 1710 |
| Dunstable, Friars Walk, Stop S4 | 1059 | 1519 | 1715 |
| Dunstable, Southwood Road       | 1103 | 1523 | 1719 |
| Caddington, Manor Road, Stop B  | 1109 | 1529 | 1725 |
| Caddington, Culworth Close      | 1110 | 1530 | 1726 |
| Aley Green, The Chapel          | 1112 | 1532 | 1728 |
| Woodside, Grove Park Road       | 1114 | 1534 | 1730 |
| Slip End, Prebendal Drive       | 1116 | 1536 | 1732 |
| Pepperstock, Caravan Park       | 1120 | 1540 | 1734 |

**SOUTH BEDS  
DIAL-A-RIDE**

**231**

**Pepperstock - Slip End - Caddington - Dunstable**

**Saturdays**

**from 3rd June 2024**

Notes:

|                                   |      |
|-----------------------------------|------|
| Pepperstock, Caravan Park         | 0855 |
| Slip End, Prebendal Drive         | 0900 |
| Woodside, Grove Park Road         | 0902 |
| Aley Green, The Chapel            | 0904 |
| Caddington, Culworth Close        | 0905 |
| Caddington, Manor Road, Stop A    | 0908 |
| Dunstable, Southwood Road         | 0914 |
| Dunstable, The Square, Stop S1    | 0920 |
| Dunstable, Church Street, Stop P2 | 0922 |
| Dunstable, Asda                   | 0925 |

Notes:

|                                 |      |
|---------------------------------|------|
| Dunstable, Asda, Stop J1        | 1215 |
| Dunstable, Friars Walk, Stop S4 | 1219 |
| Dunstable, Southwood Road       | 1223 |
| Caddington, Manor Road, Stop B  | 1229 |
| Caddington, Culworth Close      | 1230 |
| Aley Green, The Chapel          | 1232 |
| Woodside, Grove Park Road       | 1234 |
| Slip End, Prebendal Drive       | 1236 |
| Pepperstock, Caravan Park       | 1240 |

**NO SERVICE ON SUNDAYS & PUBLIC HOLIDAYS**

*Slip End Garage*  
ESTABLISHED 1959

# Slip End Village Day

**Saturday 6<sup>th</sup> July 11am-4pm**

Slip End Playing Fields  
(Next to the St. Andrews Church) EH1 4BJ

Village Groomers  
Doggy Daycare

Woolseys Miniature Railway  
WMR

*Disabled Parking Only*

**Bar • BBQ • Inflatable Football Darts • Corbiere Crepes  
Ice Cream • Fun Dog Show • Teaching Talons • Coconut Shy  
Nerf Guns • Pepperstock Archers • Woolseys Miniature Railway  
Crazy Golf • Many Varied Stalls & Games • Raffle**

*Most Stalls Cash Only*

# *Slip End Village Day*

## *Timetable*

*11:30 Revellers Steelband*

*12:00 Fun Dog Show*

*12:30 Hemlock Morris Dancers*

*13:30 Revellers Steelband*

*14:00 Slip End School Choir*

*14:30 Hemlock Morris Dancers*

*15:00 Slip End Mascot Race*

*Fun Dog Show (sponsored by Village Groomers)*

*Register on the day from 11.00 to 11.45. £2 (Cash) a class from the following*

*Pretty Bitch*

*Golden Oldie (over 9 years)*

*Waggiest Tail*

*Best Trick*

*Handsome Dog*

*Child Handler (12 years and under)*

*Best 6 Legs (dog and handler, use your imagination)*

*Best in Show*



*Subject to Change*

## D-Day 6th June 1944 80th Anniversary Celebrations.

On the 8th June, Slip End Parish Council held a celebration Tea and Coffee afternoon at the Village Hall. The hall was decked out with bunting and there were displays about D-Day and the war years (see photos).

Tea, coffee, sandwiches and cakes were supplied, dished out on cups, saucers and plates with designs of the era along with music of the war years.

There was good attendance, over 70 residents attending.

Our thanks to Tracey O'Neill for organising this and to Carol Beeton, Nicki West, Natasha West, Jenny Stubbs, Samantha Armstrong, Katie Armstrong, for volunteering their time in helping make this afternoon a success.

There is another photograph on page 33.







# @WAYNE'S

*Professional Hairdressing  
for all the family*



@WAYNE'S - Church Road, Slip End - 01582 294 248

## Butterfly Funerals

INDEPENDENT FAMILY  
FUNERAL DIRECTORS

To find out more or just have a discussion  
on what you need to do after a bereavement

please call

**01582 968130**

or visit our website:

[www.butterflyfuneralsltd.co.uk](http://www.butterflyfuneralsltd.co.uk)

39 Elm Avenue, Caddington  
Luton LU1 4HS

*Caring with Compassion*

Butterfly Funerals is run by Teresa and Peter who have been in the funeral service business for over 30 years. During that time they have gained a first class reputation for professional quality combined with a caring and compassionate approach to family and friends of the departed.

Services include:

- 24 hour call out 7 days a week
- Traditional funerals
- Bespoke funerals Pre-paid funerals
- Green funerals
- Memorial consultants
- Chapel of Rest
- Home visits
- Flowers
- Custom wills

# Fed up with pot holes? Flooding? Litter?

The quickest and easiest way to report parish problems is via the **FixMyStreet** app.

Downloadable to Android or iPhone devices, you can create an account and then track the progress of the issue.

The screenshot shows the FixMyStreet website interface. At the top, there's a navigation bar with the FixMyStreet logo and links for 'Report a problem', 'Sign in', 'All reports', 'Local alerts', and 'Help'. Below this is a main heading 'Report, view, or discuss local problems' with a sub-heading 'Like graffiti, fly tipping, broken paving slabs, or street lighting'. A form prompts the user to 'Enter a nearby UK postcode, or street name and area' with an example 'e.g. 30 426 or 'The St, Manchester''. There is a 'Go' button and a link to 'Use my current location'. Below the form, there are two columns: 'How to report a problem' with a 4-step numbered list, and 'Recently reported problems' with a list of issues like 'Drain cover', 'Very large and deep pothole near the bus stop', 'Large dip / broken section between road and pavement', 'Leak Road, Monday', and 'Abandoned Visual Cora'. At the bottom left, there are statistics: '19,986 reports in past week', '25,891 fixed in past month', and '6,658,394 updates on reports'.



## Local agents, Local knowledge

Whether buying, selling or renting, we provide a personalised, professional and individual service to help make your move as smooth as possible. Speak to one of our friendly team today.



**01582 841 200**

sales@towncountry.uk.net

1 Manor Road, Caddington, Bedfordshire, LU1 4EE

**Town &  
Country**



# SNIP ENDERS

Hair Salon  
Summer Street  
Slip End

For a free consultation or  
to arrange an appointment

Contact  
Rachel or Kelye  
07817315259



## HIGH ELMS

Tree Surgery Ltd

[www.highelmstreesurgery.co.uk](http://www.highelmstreesurgery.co.uk)  
Email: [info@highelmstreesurgery.co.uk](mailto:info@highelmstreesurgery.co.uk)

**01582 840144**  
**07939 623675**

- NPTC CERTIFIED
- POLLARDING
- RESHAPING
- STUMP REMOVAL
- HEDGES TRIMMED, SHAPED & REMOVED
- DEAD WOODING
- REDUCTIONS
- CROWN LIFTING
- LOGS DELIVERED

- TREE REMOVAL
- T.P.O. & PLANNING APPLICATIONS
- TREE SURVEY INSPECTIONS & REPORTS




FREE Estimates & Advice  
Fully Insured to £10 million & Approved by Local Authorities

Herts, Beds, Bucks & London + we will beat any written quotation

## LAIRD MATT DESIGNS

WWW.LAIRDMATTDIGNS.CO.UK

**YOUR LOCAL CREATIVE GENIUS**

- ✎ GRAPHIC DESIGN
- ✎ VIDEO EDITING
- ✎ PHOTO REPAIR (Old/damaged photos)
- ✎ PHOTO EDITING/RETOUCHING
- ✎ BUSINESS STATIONERY
- ✎ ONLINE FLIPBOOKS



MATT@LAIRDMATTDIGNS  
@LAIRDMATTDIGNS



## Stoten Gillam

chartered accountants  
chartered tax advisers

**99 High Street South**  
**Dunstable**  
**LU6 3SF**  
**Tel: (01582) 608601**  
**www.stotengillam.co.uk**



**ICAEW**  
CHARTERED  
ACCOUNTANTS



CHARTERED  
TAX ADVISERS

*"Practical  
Solutions for  
Growing  
Businesses"*



# AJB CONTRACTS

If you are looking for a local, reliable and trustworthy company, then please get in contact to discuss your project.

- Kitchens - design, supply & fit
- Bathrooms
- Carpentry
- House Refurbishment
- Building Works
- Garage Conversions
- Public Liability Insurance
- Over 35 years experience

 Find us on facebook



Alan Barton

M: 07802 294144 T: 01582 699324

E: alanbarton1@sky.com



**C & C MOTORS**  
WWW.CANDCMOTORS.ORG

OFFERING A FULL RANGE OF SERVICES INCLUDING:

- ⚙ Electrical & Mechanical Diagnostics
- ⚙ Servicing & Cambelts
- ⚙ Pre MOT & MOT Repairs
- ⚙ Brakes & Clutches
- ⚙ MOT Arrangement

NEWLANDS FARM, NEWLANDS ROAD,  
SLIP END, LU1 4BQ

01582 730 237 or 07966 253 184

[WWW.CANDCMOTORS.ORG](http://WWW.CANDCMOTORS.ORG)

## DID YOU KNOW..

The Parish News is delivered to over **950** households each and every month.

Advertising space starts from just **£37**

Contact us today.



Advertise **YOUR** local business here.

Contact Jo Moss

01582 484373

parishadverts@gmail.com

A warm welcome always awaits members and their families at...

# Slip End

## SOCIAL CLUB

Be social, make it your local!

**BIG SCREEN  
LIVE SPORTS**  
sky SPORTS BT Sport  
**DARTS**  
**FREE POOL**  
Monday to Friday only  
**DOMINOES**  
**CRIBBAGE**  
☺ **HAPPY HOUR** ☺  
Monday to Friday 4-7pm  
**BINGO WEDNESDAYS**

**LIVE ENTERTAINMENT  
EVERY MONTH**  
**GOLF SOCIETY**  
**FREE WI-FI**  
**USUAL CLUB PRICES**  
**OPENING TIMES**  
Weekdays: 4pm to 11pm  
Saturday:  
12 Noon to 12 Midnight  
Sunday: 12 Noon to 11pm



*John Saunders & Son*

*Funeral Directors dedicated to providing traditional client care.*

*Because we believe that every funeral should be as unique as the person that it's for*



FUNERAL PLANS FROM  
**Golden Charter**  
Smart Planning for Later Life



*Please call us for an informal chat or to ask any questions on 01582 731696  
or visit our website [www.johnsaundersandson.co.uk](http://www.johnsaundersandson.co.uk) to learn more about us.*

## Gardening Notes *by Russell Sprout*

As I write this article I can't believe how cold the weather is for the time of year, or how wet! Hopefully by the time you are reading this it will have warmed up and we will all be enjoying some warm sunny weather.

Deadhead roses on a regular basis to encourage a second flush in the autumn and keep an eye out for greenfly, black spot, mildew and rust. Tie young stems of dahlias to their supports with soft string or raffia and if large blooms are required then dis-bud the lower buds to get long stems for cutting and arranging in a vase.

Chrysanthemums can be treated the same way, but spray varieties should be left, although stake and tie-in shoots to avoid wind damage. Prune deciduous shrubs such as Jasmine and Philadelphus after flowering by removing spent flowers and weak shoots. Gladioli will not need staking for normal garden use but keep well watered and weed free. Irises can be divided and replanted this month and cut the top half of the leaves off to avoid wind damage. July is the month when lilies are at their best and unless you want to save the seed they should be deadheaded as the flowers fade, water carnations and pinks if the weather is dry. Early this month sow Sweet Williams and Wallflowers for colour in the spring. Rock gardens will look somewhat drab from now until the autumn but best to keep the weeds down to prevent the alpines from being overwhelmed, so keep weeding and trimming alpines and water if necessary. Mounded or carpeting plants not showing new growth should have soil mixture and fertiliser worked into them. Patio containers and hanging baskets will require watering at least once a day and deadhead to keep them looking their best.

In the greenhouse tomatoes and cucumbers should be bearing fruit; a liquid fertiliser should be applied every 7-10 days to encourage the fruits to ripen. Summer fruiting raspberries can be cut down as the fruiting canes are finished, but leave the new shoots because they will bear next year's crop. Tidy up the strawberry bed when the fruits are finished. Complete planting of leeks this month as well as late brussel sprouts, winter cabbage and spring broccoli, also plant swedes by the middle of the month. Keep pinching out the side shoots of tomato plants (except bush varieties) to get decent size fruits. In the herb garden make further sowings of Chervil, Dill and Parsley and remember to harvest just before they come into full bloom if you are going to dry them for future use.

If the weather is hot and dry and there isn't a hosepipe ban, then water the lawn regularly, aerate by spiking with a fork as this will help the water penetrate well below the surface where it's needed to keep it looking green.

You should now be enjoying the fruits of your labour as plenty of fresh vegetables, such as lettuce, carrots, beetroot, potatoes, cabbage and broad beans are large enough to harvest and the garden should be in full of colour as mother nature amazes us once again, so till next month, happy gardening.

Russell Sprout

## **St. Andrew's Church - Dates for July**

### **Services held at St Andrew's:**

July 7th - 10.30am - Informal Communion - Gift Day

July 14<sup>th</sup> - 10.30am - Morning Praise

July 21st - 10.30am - Holy Communion

July 28<sup>th</sup> - 10.30am - Family Service

August 4<sup>th</sup> - 10.30am - Informal Communion

August 11<sup>th</sup> - 10.30am - Morning Praise

August 18<sup>th</sup> - 10.30am - Holy Communion

August 25<sup>th</sup> - 10.30am - Family Service

Please note: September 1<sup>st</sup> - no service at St Andrew's as we will be joining St Paul's, Luton.

We are continuing with a monthly Family Service on the last Sunday of each month. Of course all ages are welcome to every service, but the service content will be especially accessible to all generations at the Family Service.

If you would prefer to join the live service virtually, Nick has set up a Zoom link which is open to all. You can join by putting in the number 878 5926 2657 and the passcode 664663 to Zoom or by clicking the link [https://us02web.zoom.us/j/87859262657?](https://us02web.zoom.us/j/87859262657)



The logo for 'Little Stars' features the words 'Little Stars' in a red, cursive font. Above the text are several small stars in blue, yellow, and red.



**Little Stars starts at 10.30am each Wednesday.**

We will be running sessions on 3rd, 10th and then will be closed for Summer, restarting in September.

The kettle goes on at 10am – turn up whenever suits your little one's routine.

### **Little Singing Stars**

Little Singing Stars is taking a break in July and August and will return in September.



## Message from St Andrew's Jul/Aug 24

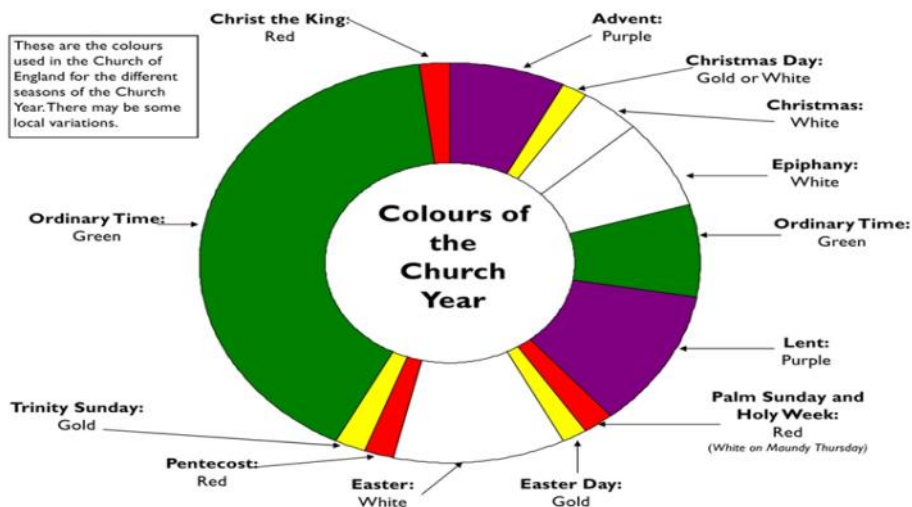
Did you know that the church year is marked by different colours? This is a way of marking special festivals and seasons. The colour wheel below shows that the main colour is green, which marks Ordinary Time (from Pentecost to Advent). In a world addicted to excitement and the extraordinary does that mean that Ordinary Time is the boring part of the year? Far from it!

I think anyone facing a drastic change of circumstances – the refugee fleeing war, the person made redundant, or facing a life-altering illness, or the bereaved – would have a sense of longing for the ordinary. To quote Joni Mitchell, don't it always seem to go that you don't know what you've got 'til it's gone.

God isn't just in the spectacular, he is in the regular rhythm of Sunday services. If we only care about the special red letter days, we may start to think that God is only worshipped in splendour and majesty. In reality he isn't a Sunday best God. He is a God of the everyday. The God whose throne is in heaven is also the God whose Son was placed in a feeding trough. He is present in the magnificent architecture of cathedrals, but also while we are doing the washing up, or walking the dog or playing in the park with our children.

And celebrating the ordinary is a reminder that God isn't just about spectacular conversion stories. God loves us when our experience is of years of gentle companionship with him. He calls us as we are.

Julie Taylor, Lay Reader



## St Andrew's Church: Environmental Sunday



On the 2nd June an outdoor worship service was held in the Churchyard with St Paul's Luton Church. The band and singers led the music and singing and also included many facts about our environment. Rev Nick Mwandia led the prayers alongside Tammy King and Sylvia Harland.



Tammy gave us the sign language for 'He's got the whole world in his hands'. She also did an interesting sketch about the Weather Forecast .



Sylvia had organised a quiz regarding water and many facts about it. It was very interesting to learn how water is so important and affects us all.



The congregation



Signs for song about colours —  
God you made them all



After the service there was a plastic free Faith lunch enjoyed in the church garden

Report by Sue Briggs

## Rising Sun Picnic lunch with Good Neighbour Scheme and St Andrew's Church

On June 4th at the Rising Sun another successful lunch meeting took place with many of the pensioners from the Parish. Instead of soup, there was pork pie and crisps and cheese and pineapple, alongside a big selection of sandwiches which the ladies from GNS make up.

Liz Higgins, pianist from Aley Green and St Andrew's had brought along song sheets with songs from the war, including many old-time favourites, 'We'll meet again' and 'The White Cliffs of Dover'.



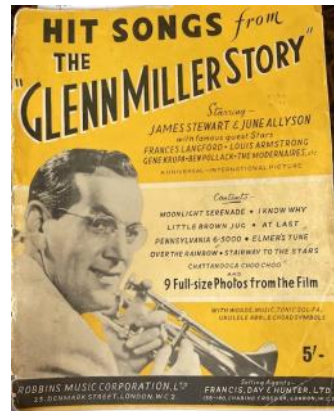
After the first set of songs enjoyed by all, cake was served and war-time bread pudding, alongside tea or coffee.



Liz also recounted to us a memory of her lovely mum who had worked on the anti-aircraft guns at Fort Southwick on Portsdown Hill, Portsmouth.

Glen Miller and his Band arrived to entertain the troops and they put two flatbed lorries together and proceeded to perform to everyone there,

The Glen Miller book which belonged to her mum below is therefore very precious to Liz. Many thanks Liz for playing and telling us about your mum and Glen Miller. It was a great afternoon.



*Reported by Sue Briggs*



# St Andrew's Woodside Community Coffee Morning

Tea, coffee, conversation and good company



**Saturday 27<sup>th</sup> July 2024**  
**10.00 am to noon**  
**at St Andrew's Church**

NB we will not be meeting in August.  
Tea, coffee, conversation and good company  
Drop in at any time. All welcome.

**Contact Julie on 413912 if transport is a problem.**

## Chiropodist

*State Registered*

**Home visits Evening &  
Weekend appointments**

*Keith Appleby BSc (Hons), MChS, SRCh*

**Telephone: 01582 873136**

**A. McClelland  
Pest Control**



For fast response call  
Mobile 0777 494 8415  
or office 01582 872158

email: [amcclellandpestcontrol33@gmail.com](mailto:amcclellandpestcontrol33@gmail.com)

**Charisma**

## **Hair & Beauty Salon**

**Ladies &  
Gentlemen  
01582 722801**



### **Opening Times**

*Mon: Closed  
Tues: 9-5  
Wed: 9-1  
Thurs: 9-7  
Fri: 9-6  
Sat: 8-3*

*Easy Parking!*

*43B Elm Avenue, Caddington*

*[www.charisma-caddington.com](http://www.charisma-caddington.com)*



*Find us on Facebook*



**Need a reliable  
Window &  
Carpet Cleaner?**

*We operate in the  
Slip End area  
For free quotation  
contact us on  
01462 629302  
07970 406 926*

# Richard Gurney & Son Contracting Services

Longview, Luton Road, Markyate

*Tree Surgeons & Fencing Specialists  
Hedge Trimming & Tree-stump removal  
Wood Chippings (good for mulching)  
Logs for Sale*

**Tel. (01582) 840407**

*Established 1970 - Fully Insured*



## P H SERVICES

CAR & MOTORCYCLE REPAIRS  
**PHILIP HALL**  
MECHANIC

4 Servicing    4 Bodywork  
4 Tyres        4 MOT  
4 Computer Diagnostics



**UNIT 3  
MANOR ROAD GARAGE  
CADDINGTON**

Office: 01582 722251  
Mobile: 07769 734417

Damaged bikes wanted for Cash  
Nationwide collection  
e-Mail: philhall1200@btinternet.com

10% Discount with this voucher!

## STROBE ELECTRICS

**ELECTRICIAN**

**NIC APPROVED**

ESTABLISHED 25 YEARS

**House Rewires Part P REG**

**No Job Too Big or Small**

**For a job well done**

**Quality Assured**

**Call Graeme**

**01582 451442 or 07956 570692**

**Problems  
with your  
PC or  
Apple-mac?**



*For expert advice & trouble shooting  
call Tony Glynos, 458353 or 07792 653264  
[tonyglynos@outlook.com](mailto:tonyglynos@outlook.com)*

*Friendly*

**Karen Jordan**

07970487338

**Grass Cutting**

**Weeding**

**Strimming**

**General Tidying**



*Reliable*

*Local*

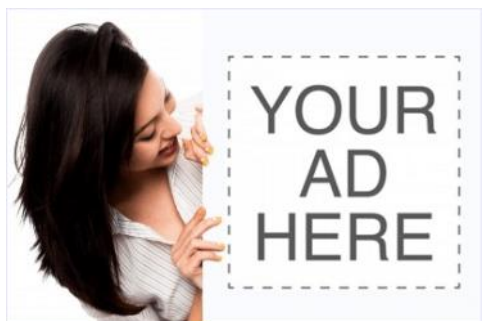
## PILATES IN SLIP END

Tuesday morning, Peter Edwards Hall 9.30am  
Wednesday evening, Slip End School 7.30pm

All ages & levels catered for. Come & try, first class free.

Introducing the Pilates Reformer Machine. Ideal for rehabilitation after injury or surgery. Perfect for sport specific training, Pre & Post Natal & general fitness.

For more information contact 07811343566 or  
email:- [golf58.ag@gmail.com](mailto:golf58.ag@gmail.com)



# Quiz Page

- 1). Which mainland English county has two separate coastlines?
- 2). Before 1827, theft of more than 12 pence was defined as what?
- 3). Who is the only UK prime minister with a PhD?
- 4). At what football ground are sweets thrown into the crowd before matches?
- 5). Which siblings are depicted on the Capitoline Wolf sculpture?
- 6). What is the only widely spoken Celtic language in mainland Europe?
- 7). Which religion was formally banned in Japan in 1614?
- 8). Which house was served by Wolferton railway station?
- 9). Deeds of the 63 Illustrious Men is a key text in what Indian religion?
- 10). Who appeared heavily pregnant on Top of the Pops in 1988?
- 11). On a non-leap year which date is the exact mid point of the year  
A). 1st July: B). 2nd July: C). 15th July: D). 30th July?
- 12). In the pre Roman Germanic calendar which crop was July named after  
A). Lettuce: B). Carrots: C). Turnips: D). Hay?

## Quote for the Month

When you take care of yourself, you're better person for others.

When you feel good about yourself, you treat others better.

Solange Knowles



# INKERMAN

**BUILDING & ROOFING Co.**

**EXTENSIONS - CONVERSIONS - RENOVATIONS**

- ✓ Restoration ✓ New Build
- ✓ Flat & Pitched Roofing
- ✓ All General Building Work
- ✓ Painting & Decorating
- ✓ Electrical Works & Plumbing
- ✓ Brickwork Contractors
- ✓ Patios & Driveways ✓ Fencing
- ✓ Groundworks/Drainage
- ✓ Insurance Work
- ✓ Garage Conversions
- ✓ Public Liability Insurance

**EXTENSIONS • CONVERSIONS • RENOVATIONS**

[www.inkermanbuilding.co.uk](http://www.inkermanbuilding.co.uk)

**The Complete Design  
Plan-Completion Service Included**



**Tel: 01727 835702 or Mobile: 07774 95255**

**Tel/Fax: 01582 876509**

Email: [info@inkermanbuilding.co.uk](mailto:info@inkermanbuilding.co.uk) • 46 Church Road, Slip End, Bedfordshire LU1 4BJ

## Why practice self-defence?



Join us for our NEW children's class starting 6.30pm on Thursday 1st June at the Lyons Community Centre - First Class free! Teaching children the essential skill of self-defence. Contact us on 07956 286930 to book your child's place.

Shinrai Martial Arts teaches Jujitsu and kickboxing giving you two Martial Arts styles in one club. These are just some of the benefits to people of all ages.

- Promotes physical fitness, strength and flexibility
- Builds confidence and awareness
- Learn potentially lifesaving skills
- Strong social aspect where many friendships can be made
- Discipline
- Lose weight
- Fun

Children (ages 6 – 15) Monday 6.15pm - 7.15pm  
Thursday 6.30pm - 7.30pm  
Women only (16+) Monday 7.30pm - 8.30pm

**Location:**  
Find us at the brand new Lyons Community Centre in Caddington Woods,  
33A Mallard Crescent,  
Caddington,  
Luton.

**TEASHA MITCHELL**

2ND DAN BLACKBELT JUJITSU  
1ST DAN BLACKBELT KICK BOXING  
DBS CHECKED

NATIONAL BLACKBELT REGISTERED

MEMBER OF BRITISH MARTIAL ARTS AND BOXING ASSOCIATION



To book or for further information please email Sensei Teasha Mitchell  
[teasha@shinraimartialarts.com](mailto:teasha@shinraimartialarts.com)

**Find out all about us at [www.shinraimartialarts.com](http://www.shinraimartialarts.com)**

Shinrai Facebook Page: Shinrai Martial Arts

## **ALL ABOUT PLANNING**

### **Planning applications received within the Parish since May 2024.**

Application CB/24/01219/DOC

Submitted 10th May 2024

Land adjacent to Ashridge, Pepsal End Lane, Pepperstock, LU1 4LJ  
Discharge of Conditions 7, 11, and 17 against planning permission CB/20/0056/FULL  
Erection of 6 affordable Key worker cottages, Fencing for tree protection, Noise assessment, vehicular access.  
Decision: Not Yet Decided

Application CB/24/01552/LDCP

Submitted 29th May 2024

Cobblers Gold, Mancroft Road, Aley Green, LU1 4 DG  
Land Development Certificate Proposed. Construction of front boundary brick wall with metal railings.  
Decision: Not Yet Decided

Application CB/24/01593/DOC

Submitted 31st May 2024

Discharge of Conditions 5, 6 and 9 against planning permission CB/23/03894/FULL  
( Change of use from retail/restaurant (Class E3) to education use (Class F1(a) including provision of multi-use games area, new fencing and landscaping). Staff travel plan, details of acoustic fencing, details of electric vehicle charging facilities.  
Decision: Not Yet Decided

Application CB/24/01638/LDCP

Submitted 4th June 2024

Lawful Development Certificate Proposed. Conversion of existing garage to habitable space. Block up garage door with installation of door and windows, and installation of roof windows to front elevation.  
Decision: Not Yet Decided

Application CB/24/01424/FULL

Submitted 13th June 2024

Land between 90 and 128 Front Street, Slip End  
Erection of new stable building.  
Decision: Not Yet Decided

For further information on applications visit [www.centralbedfordshire.gov.uk](http://www.centralbedfordshire.gov.uk) to view planning applications.if you wish to comment on an application:-

email: [planning@centralbedfordshire.gov.uk](mailto:planning@centralbedfordshire.gov.uk).



# Quiz Answers

- 1). Devon.
- 2). Grand larceny.
- 3). Gordon Brown.
- 4). Goodison Park (Everton FC).
- 5). Romulus and Remus.
- 6). Breton.
- 7). Christianity.
- 8). Jainism.
- 9). Sandringham
- 10). Neneh Cherry.
- 11). B). 2nd July.
- 12). D). Hay.

## D-Day Celebrations 80th Anniversary 8th June

Some of the residents enjoying the sandwiches, cakes, tea and coffee.

The volunteer servers are wearing clothes of the era.



We all enjoyed a Quiz at our June meeting. Carol Hardy hosted this. We all sat on tables of 5 and found the quiz really hard. This caused a lot of laughter amongst us. The previous quiz was even harder! We have asked for a much easier next time.

Our trip to Portsmouth is going ahead. Looking forward to a good day out.

We have a Jigsaw Challenge In October so need a few teams to compete. We really enjoyed the last one.

November a Table Top Sale in Flitwick.

On July 2nd we will be having a Games Night, table tennis, darts, boule etc. all good fun.

We meet on the 1st Tuesday of each month at 7.30 pm at the Caddington Sports centre.

Linda Edwards  
O7761 340108

# St Andrew's Church June 6th 2024

## 80th Anniversary of D Day

On 6th June the lighting of Beacons and bells rung out for Peace to mark the 80th Anniversary of D Day when Allied forces mounted the largest invasion the world had ever witnessed.

At St Andrews Church at 6.30p.m. Ted, age 6 from Slip End Village school and myself (his Grandma) rung the Church bells 80 times to remember D-Day and the Liberation of Europe, which should never be forgotten.

This was followed by prayers for Peace.



**Well done Ted**



**By Sue Brigg**



## Crime Stats for May 2024

### Aley Green

None

### Hyde

- Death or serious injury by dangerous driving – 1
- Theft or Unauthorised taking of a motor vehicle – 1
- Other theft – 1

Total - 3

### Pepperstock

None

### Slip End

- Public Fear Alarm or Distress – 1
- Theft or unauthorised taking of a motor vehicle – 1
- Theft from a Motor Vehicle – 1
- Attempted Residential Burglary – Home – 1
- Assault without injury on a Constable – 1
- Criminal Damage – Residential - 1

Total – 6

### Woodside

None

### Caddington

- Harassment – 4
- Criminal damage to a vehicle – 3
- Theft or Unauthorised taking of a Motor Vehicle – 2
- Burglary – Business & Community – 2
- Public fear alarm or distress – 2
- Race or Religiously Aggravated Harassment – 2
- Sexual - 2
- Interfering with a motor vehicle – 2
- Assault without injury – 2
- Theft from a motor vehicle – 1
- Shoplifting – 1
- Endangering Life – 1
- Other notifiable offences - 1
- Stalking – 1
- Other Criminal Damage – Residential – 1
- Other Criminal Damage - 1
- Blackmail - 1
- Malicious Communications - 1

Total – 30



*Diary - If you would like your events included, please contact the Editor*

### What's going on in 2024

**Weekly** Chatty Club every Wednesday Rising Sun 2pm—4pm

#### July

**Mon 1st** Parish Council Meeting—Village Hall

**Sat 6th** Slip End Village Day - Playing Fields

**Wed 24th** Good Neighbours Tea Party—Village Hall 2:30—4:30

**Sat 27** Coffee Morning St Andrew's 10am (see page 28)

**August** Nothing to report

#### September

**Mon 16th** Gardening Club 8pm Village Hall (see Page 10)

### Parish News Online

For those who like to read magazines on tablet / screen, Parish News can be found online at:-

[www.slipendparishcouncil.co.uk](http://www.slipendparishcouncil.co.uk) and [www.slipend.co.uk](http://www.slipend.co.uk) where historical copies can also be found.

### Bin Collections - July

Orange - 12th, 26th July, 9th, 23rd August

Black bin and Glass - 5th, 19th July, 2nd, 16th, 30th Aug

Food Waste bin - Every Friday

Green - 12th, 26th July, 9th, 23rd August

(Only if you have subscribed for collection)



## COMMUNITY AND SERVICES

|   |  |
|---|--|
| <b>Services:-</b>                       | <b>Good Neighbour Scheme:</b> 07513 37 24 15                 |
| <b>Shop at the Crossroads</b>           | 401069 Mon—Sun 7.00 to 21:00                                 |
| <b>Slip End Garage</b>                  | Markyate Road, 456888  |
| <b>Doctor</b>                           | Caddington Surgery 725673                                    |
| <b>Doctor</b>                           | Markyate Surgery 841559                                      |
| <b>Pharmacy</b>                         | Medigreen, Caddington 457800                                 |
| <b>Schools:</b>                         | <b>Slip End Village School</b> 720152 <b>Manshead</b> 679400 |
| <b>Caddington Village School</b> 726058 | <b>St Mary's Catholic Primary</b> 602420                     |

|  |  |  |
|--|--|--|
| <b>Churches:-</b>  | <a href="mailto:wayne@dngsales.co.uk">wayne@dngsales.co.uk</a>                 | <b>FoSELS</b> 07810002942 PTA)<br>or <a href="mailto:fosels@outlook.com">fosels@outlook.com</a>                        |
| <b>St Andrew's Church</b>  |  |  |
| <b>Rev Nick Mwandia</b>  | <b>Pepperstock Archers</b>   | <b>Women's Institute</b> 01582<br>737036   |
| 01582 253537   | 07914 381847   |  |
| 07398663729  | Email  |  |
| <a href="mailto:revstandreww@gmail.com">revstandreww@gmail.com</a>             | <a href="mailto:targetsports@virginmedia.com">targetsports@virginmedia.com</a> |  |
| <b>Julie Taylor (Reader)</b>   | m (Chris Ingram)   | <b>Chatty Club</b> Jean Turner 01582<br>421304 or Cathy Rose 01582<br>457362   |
| 01582 413912   | <b>Tennis</b> 733253   |  |
| Mob 07841482119  | <b>Runners</b> Peter Barber  |  |
| <a href="mailto:duncan.taylor@btinternet.com">duncan.taylor@btinternet.com</a> | 07587 89260.   |  |
| <b>Wardens:</b>  | <b>Slip End Veterans Football</b>  | <b>Book Club</b> (contact via<br>Parish News)  |
| <b>Steve Baird</b> 738205  | Wayne Leslie (see football)  |  |
|  | <b>Line Dancing</b> —Jean<br>Anderson 01582 2603030                            |  |
| <b>Aley Green Methodist<br/>Church.</b>  | <b>Community:-</b>   | <b>CaSeBuG (Caddington and<br/>Slip End Bus user group).</b><br><a href="mailto:info@casebug.org">info@casebug.org</a> |
| <b>Minister:</b>   | <b>Gardening Club</b> 423622   |  |
| <b>Rev Nigel Bibbings</b>  | <b>Beavers,</b>  | <a href="http://www.slipend.co.uk">www.slipend.co.uk</a>   |
| <b>Senior Steward:</b>   | <b>Cubs &amp; Scouts</b> 418014  |  |
| <b>Ann Meader</b> 733668   |  |                                      |
| <b>Sport:-</b>   | <b>Pre-School</b> - Hayley   | <a href="http://Slipendparishcouncil.co.uk">Slipendparishcouncil.co.uk</a>   |
| <b>Bowling Club</b> 412506   | Bolton- 07889824367  |  |
| <b>Football</b>  |  |  |
| 517042 or 07515687160  |  |  |

### Items for the next issue (September) to us by 15th August 2024

(Editor — Matt) Adverts by 10th please

Any delivery problems? Contact Alan Buttery at 1 Claydown Way  
(01582 724527), [alanjan4546@gmail.com](mailto:alanjan4546@gmail.com)

Anything interesting to report about village activities, photos, holidays, etc.  
Please contact us, letters and e-mails are encouraged.

Views expressed by our contributors are not the Editors' own.

Articles should be sent by the 15th of the preceding month to the Editors - John Larsen  
1 The Grove, Woodside Park or Matt Freeman 20 Crawley Close  
or e-Mail [parishnews@slipend.co.uk](mailto:parishnews@slipend.co.uk)

Advertising queries to Jo Moss 01582484373 or [Parishadverts@gmail.com](mailto:Parishadverts@gmail.com)

Parish News is grateful to our advertisers for their contributions. Please support them.

## YOUR PARISH COUNCILLORS

Clerk to Parish Council — Tracey O'Neill 07487 850249 (9am to noon weekdays)  
[clerk@slipendparishcouncil.co.uk](mailto:clerk@slipendparishcouncil.co.uk)

|  |                         |
|--|-------------------------|
| Sarah Minnighan - <a href="mailto:s.minnighan@slipendparishcouncil.co.uk">s.minnighan@slipendparishcouncil.co.uk</a> | 07868 742904 (Chairman) |
| Carol Beeton - <a href="mailto:c.beeton@slipendparishcouncil.co.uk">c.beeton@slipendparishcouncil.co.uk</a>          | 01582 405597            |
| Carol Brennan - <a href="mailto:c.brennan@slipendparishcouncil.co.uk">c.brennan@slipendparishcouncil.co.uk</a>       | 07979 402847            |
| Simon Patterson - <a href="mailto:s.patterson@slipendparishcouncil.co.uk">s.patterson@slipendparishcouncil.co.uk</a> | 07767 615714            |
| Paul Shaw - <a href="mailto:p.shaw@slipendparishcouncil.co.uk">p.shaw@slipendparishcouncil.co.uk</a>                 | 07957 188947            |
| Steve Baird - <a href="mailto:s.baird@slipendparishcouncil.co.uk">s.baird@slipendparishcouncil.co.uk</a>             | 01582 738205            |
| Stuart Durdell - <a href="mailto:s.durdell@slipendparishcouncil.co.uk">s.durdell@slipendparishcouncil.co.uk</a>      | 07527 389531            |

**GOOD NEIGHBOUR SCHEME (GNS) 07513 37 24 15**

## WHO DO I CALL?

**Fly Tipping (CBC)** 0300 300 8000 [Customer.Services@centralbedfordshire.gov.uk](mailto:Customer.Services@centralbedfordshire.gov.uk)  
**Road issues:-** [www.centralbedfordshire.gov.uk/reportit](http://www.centralbedfordshire.gov.uk/reportit)

**Police** 101      **Aircraft noise** 395382 or [noise@ltn.aero](mailto:noise@ltn.aero)

**Airparks** 393321      **Water leaks** 0800 3765325      **Cold Calling** 0345 4040506

**Out of hours noise** 0300 300 8098      **Street Lighting** 0300 300 804

### Your Central Beds Councillors



Contact details



Cllr Kevin Collins

Cllr Vicky Malone

[kevin.collins@centralbedfordshire.gov.uk](mailto:kevin.collins@centralbedfordshire.gov.uk)

[Vicky.malone@centralbedfordshire.gov.uk](mailto:Vicky.malone@centralbedfordshire.gov.uk)

### MP's

**Contact details**  
**Rachel Hopkins**



*Her local office is located at:  
3 Union Street Luton LU1 3AN  
For advice, surgery appointments  
call 01582 457 774*

### SLIP END VILLAGE HALL

*Your Village Hall*

for Dances, Receptions & Parties  
Facilities for the disabled

*For bookings contact*  
[villagehall@slipendparishcouncil.co.uk](mailto:villagehall@slipendparishcouncil.co.uk)  
or Gill Plummer on 01582 723109

### PETER EDWARDS HALL & PLAYING FIELD

Ideal for children's & adult's parties, meetings, etc.

Kitchen facilities with catering service available

Available for various sports activities

Excellent sports changing facilities

Facilities for the Disabled

For Bookings: please contact

[PEHall@slipendparishcouncil.co.uk](mailto:PEHall@slipendparishcouncil.co.uk)

## ESTABLISHED 1939



### NEW SALES



We always have great offers available including high deposit contributions, upgrade packages, free service packs and highly competitive finance options.

To find out more about our latest offers, visit us online or call our sales department now.



### USED SALES



Here at Slip End Garages we have a fantastic choice of used cars for sale. Our stock is always changing and currently includes used Citroën, Subaru and Isuzu vehicles.

We are always updating our website with our current stock visit us online or call now.



### PARTS



Whilst being one of the largest Citroën Dealerships in the Home Counties we also have one of the largest supply of vehicle parts and accessories available.

Whatever you need, we are here to help, just give our parts department a call.



### SERVICE



We have over 73 years of Vehicle maintenance experience with a full collection and delivery service available to our customers as well as provide courtesy cars for service and MOT.

Call our service department and we will take care of all of your service requirements.

**LOCAL RESIDENTS RECEIVE A FURTHER £200 DISCOUNT ON ALL NEW AND USED VEHICLES + SPECIAL RATES ON ALL SERVICING**

## Slip End Garages 01582 456888

Markyate Road Slip End, Luton, Bedfordshire, LU1 4BU  
Our Service Centre is located in Grove Road, Slip End  
Email: [info@slipendgarages](mailto:info@slipendgarages)

[WWW.SLIPENDGARAGE.CO.UK](http://WWW.SLIPENDGARAGE.CO.UK)